

Application of Corporate Social Responsibility -- Taking Chinese Listed Companies in the COVID-19 as an Example

Chih-Yi Hsiao*, Hao-Wei Chen

Xiamen University Tan Kah Kee College, Zhangzhou, China

*Corresponding author: cyhsiao@xujc.com

Received September 03, 2021; Revised October 19, 2021; Accepted October 28, 2021

Abstract During the period of COVID-19, many enterprises were supported by the consumers because they carried out corporate social responsibility behavior. However, is corporate social responsibility a panacea for business strategy? This study focuses on a sample of Chinese listed companies from 2019 to 2020 to explore the relationships among corporate social responsibility, financial constraints, and financial performance. In addition, we discuss five factors affecting financial constraints. We also analyze the types of enterprises that can improve their financial performance by implementing corporate social responsibility keeping in mind the factors that lead to a high degree of financial constraint. The results indicate that: 1. The degree of financial constraints has a negative and significant impact on financial performance; 2. There is a reverse relationship between the degree of financial constraints and the effectiveness of corporate social responsibility measures; 3. Enterprises with high financial constraints (due to lower financial slack and revenue growth rates) can significantly improve their financial performance through the implementation of effective corporate social responsibility programs. 4. Enterprises with high financial constraints, caused by financial slack and revenue growth rate, can significantly improve their financial performance by implementing corporate social responsibility programs.

Keywords: financial constraints, corporate social responsibility, financial performance

Cite This Article: Chih-Yi Hsiao, and Hao-Wei Chen, "Application of Corporate Social Responsibility -- Taking Chinese Listed Companies in the COVID-19 as an Example." *Journal of Business and Management Sciences*, vol. 9, no. 4 (2021): 145-155. doi: 10.12691/jbms-9-4-1.

1. Introduction

Capital and enterprise operations are closely related; therefore, capital costs and business management have been topics under close review in recent decades. The theory of financial constraints provides inspiration for relevant research on enterprise capital. [1] summarized the definition of financial constraints as follows: due to the influence of market information asymmetry and agency cost, the financial costs inside and outside enterprises are different. Higher financial constraints hinder enterprises from coping with day-to-day operations and investment projects of the business. There are many real-world cases where corporate social responsibility (CSR) programs/actions have supported companies' financial recovery.

ERKE, a Chinese sporting goods brand, donated 10 million yuan for COVID-19 relief in 2020, and donated 50 million yuan in July 2021 to aid with the aftermath of the heavy rain disaster in Henan province. Since its establishment in 2000, the company has developed rapidly. The group owns more than 7000 stores worldwide and has been outstanding in many brand evaluations in previous years. It was listed on the Singapore stock exchange in

2005. However, due to serious losses, it was suspended in 2011 and delisted in 2020. ERKE lost as much as 220 million yuan in 2020, with an additional loss of more than 60 million yuan in the first quarter of 2021. After the disaster relief efforts of the company spread, support from domestic consumers increased sharply, and the company then faced a situation of over-booking and excessive demand over production capability. This is a positive example where the implementation of CSR efforts reversed the disadvantages of enterprise management. Inspired by this case, this study explores the relationships among financial constraints, CSR, and financial performance.

Most existing literature discuss the impact of financial constraints or CSR on financial performance and most of them conduct empirical research based on the overall indicators of financial constraints. This study comprehensively explores the relationship among these three elements and explores the constituent elements of financial constraints in detail to analyze the characteristics of enterprises that are more capable of improving financial performance via CSR implementation. We expect the results of this study to provide a reference basis for enterprises to develop complete strategies within their respective financial constraints.

2. Literature Review

2.1. Corporate Social Responsibility and Environment, Social and Governance (ESG) Policies

2.1.1. The Definition and Connotation of CSR and ESG

So far, there is no universal definition for CSR, and this has contributed to the ineffective global regulation of the field. However, the definition of CSR given by world-renowned institutions and scholars can be summarized as follows: the behavior of all stakeholders associated with business activities should conform to ethics. It includes the aspects of environment, economy, labor rights, social care, and legal compliance. With the rise of the concept of CSR, people's judgment of investment targets is gradually incorporated into the performance of corporate social responsibility. Therefore, the ESG investment method has become a trend. ESG originated from Socially Responsible Investment (SRI) in Europe and America in recent decades. Investors now believe that the evaluation of investment targets should focus not only on financial performance, but also on non-financial aspects, that is, CSR performance. In the abbreviation ESG, "E" (Environment) represents the company's feedback on environmental problems in the process of operation, such as energy conservation and emission reduction, sewage treatment, and other related environmental protection behaviors; "S" (Society) represents the social responsibility of the company, such as charitable acts, disaster donations, and poverty donations and acts such as protecting the rights of the company's employees and their responsibilities to customers or manufacturers;

"G" (Governance) represents the internal governance structure and management system of the company. The world's first ESG fund was established in the United States in 1971, and the world's first ESG index fund was established in 1990. Later, the United Nations established the United Nations' supported principles for responsible investment (UNPRI) in 2006, of which more than 80% were signatories from European and American countries, indicating that ESG investment in Europe and America had been widely recognized at that time. After the concept of ESG was put forward, it became an evaluation standard for corporate responsibility investment, also playing an important supplementary role in traditional credit rating [2], which is usually a positive role in the overall credit rating [3].

2.1.2. Current Development of ESG in China and the World

Globally, ESG has been promoted by many global organizations, such as the GRI guidelines for sustainable development reports issued by the Global Reporting Initiative (GRI) and non-profit sustainable accounting standards issued by the non-profit sustainable Accounting Standards Committee. In recent years, ESG rating systems and indices have been established successively, such as the Fitch Ratings ESG credit rating system, MSCI ESG index, and S&P 500 ESG index.

China's ESG began relatively late. The Shenzhen Stock Exchange issued guidelines on CSR for listed companies on the Shenzhen Stock Exchange in 2006. Later, in 2008, the Shanghai Stock Exchange issued instructions on strengthening CSR for listed companies. In 2015, the General Administration of Quality Supervision, Inspection, and Quarantine of the People's Republic of China and Standardization Administration of the People's Republic of China issued the Guidance on Social Responsibility. The China Securities Regulatory Commission revised the guidelines for the governance of listed companies in 2018, adding new content such as stakeholders, environmental protection, and social responsibility requiring listed companies to practice the concept of green development and to actively assume social responsibility. The Industrial and Commercial Bank of China (ICBC) has also attempted to build and test the ESG green rating system [4]. In terms of the specification of corporate social responsibility report disclosure, the Global Reporting Initiative (GRI) published the first edition of the Sustainable Development Reporting Guidelines in 2000 and the latest GRI standards in 2016. Currently, GRI reporting guidelines are the most widely recognized social responsibility reporting framework in the world. The initiative of enterprises to disclose high-quality social responsibility reports helps enterprises treat their social responsibility behaviors more rigorously and reduce errors, thereby helping improve financial performance [5].

ESG was developed earlier and thus became more mature in western countries. However, although China started slowly, it has developed rapidly. Various research documents and government policies have been issued. The importance of ESG is expected to grow in the future.

2.2. Definition, Indices, and Evaluation Models of Financial Constraints

2.2.1. Definition of Financial Constraints

To date, there is no globally consistent definition of financial constraints. Referring to the definitions given by well-known scholars at home and abroad, including [6], in the operation of the perfect capital market, the internal and external capital of the enterprise can completely replace each other, so the investment behavior of the enterprise will not be affected by the financial situation of the enterprise itself. In reality, however, the capital market is imperfect. Information asymmetry leads to enterprises' inability to grasp external financial information, and banks charge handling fees as agency costs, which lead to an increase in external financial costs. This difference in internal and external financial costs, that is, the degree of financial constraints faced by enterprises, is positively related to the degree of information imbalance (Greenwald et al., 1984; [1,7]). [8] believe that, in addition to the gap between the internal and external financial costs caused by imperfections in the capital market, the dividend payment rate also affects the retained earnings of the enterprise, and consequently affects the funds retained within the enterprise. Therefore, the dividend payment rate of an enterprise is also one of the elements that measures the degree of financial constraints. [9] further found that, due to the influence of financial constraints, the investment

behavior of enterprises depends not only on investment demand but also on their own internal capital. Based on the research theories of the above scholars, follow-up research on financial constraints mostly focuses on information asymmetry and agency costs. A number of studies have proven the existence of many factors affecting financial constraints, such as the negative correlation between R & D investment and political relevance [10]. Another example is that competition among banks can ease corporate financial constraints [11,12].

2.2.2. The Evaluation Models of Financial Constraints

Financial constraint indicators mainly include the FHP model [8], KZ index [1], WW index [13], and SA index [14]. Some models or indices are built by domestic scholars. For example, [15] constructed a financial constraint evaluation model.

The FHP calculation model is an investment function model established by Fazzari, Hubbard, and Petersen with fixed asset investment as the dependent variable and Tobin's Q and cash flow as independent variables.

$$(I/K)_{i,t} = f(X/K)_{i,t} + g(CF/K)_{i,t} + v_{i,t}$$

where (I / K) represents the ratio of the company's investment in fixed assets to the total capital at the beginning of the period in phase t, X represents the variable that theoretically determines the investment demand, CF refers to the internally generated cash flow coefficient, g refers to the sensitivity of the investment to the fluctuation of internal financial, and Tobin's Q — the company's market price (share price) / the company's replacement cost.

[16] constructed a calculation model of the KZ index by selecting the company's operations based on the research of [1]. The larger the value of the KZ index, the higher the degree of financial constraints. The calculation model is as follows:

$$\begin{aligned} KZ_{it} = & -1.001909 * OCF_{it} / Asset_{it} \\ & + 3.139193 * Lev_{it} - 39.3678 * Dividends_{it} / Asset_{it} \\ & - 1.314759 * Cash_{it} / Asset_{it} + 0.2826389 * Tobin's Q_{it} \end{aligned}$$

OCF refers to operating cash flow, asset refers to total assets, dividends refer to dividends paid out, cash refers to cash holding level and the above are standardized total assets at the beginning of the period. Lev refers to the asset liability ratio and Tobin's Q refers to Tobin's Q value [market price (share price) / replacement cost of the company].

The calculation model of the WW index is constructed by Whited and Wu from the linear combination of six indicators: virtual variable of dividend payment, cash flow, asset liability ratio, company size, and sales growth rate of the company and industry. The calculation model is as follows:

$$\begin{aligned} WW_{it} = & -0.091 * CF_{it} - 0.062 * DIVPOS_{it} + 0.021 * TLTD_{it} \\ & - 0.044 * LNTA_{it} + 0.1021 * SG_{it} - 0.035 * SG_{it} \end{aligned}$$

CF refers to the ratio of cash flow to total assets, and DIVPOS is an indicator. If the company pays cash dividends, the value is "1"; TLTD is the ratio of long-term

debt to total assets; LNTA is the natural logarithm of total assets; ISG is the company's three-digit industry sales growth; SG is a solid sales growth.

[14] classified the financial constraints of companies randomly sampled from 1995 to 2004. Estimated Ordered Logit Model Prediction was used. The research results cast considerable doubt on whether the KZ index is effective as a measure of financial constraints. This shows that the measurement of financial constraints of the KZ index may be inaccurate owing to many endogenous factors. Based on this, a calculation model for the SA index is proposed. The calculation model is as follows:

$$SA_{it} = -0.737 * SIZE_{it} + 0.043 * SIZE_{it}^2 - 0.04 * AGE_{it}$$

Here, size and age refer to the size and age of the company. These two elements are basic elements based only on the company's characteristics.

After comprehensively considering classical evaluation models such as FHP, KZ, and WW, based on the differences between China's financial system and foreign development, Chinese scholar [15] improved the original variables and developed a financial constraint evaluation model that is more suitable for Chinese enterprises with stochastic frontier equations. The model is as follows:

$$\begin{aligned} FC_{i,t} = & -8.530658 * \Delta PR_{i,t} \\ & - 0.4599886 * SIZE_{i,t} - 0.0030249 * SLACK_{i,t} \\ & - 2.453183 * CF_{i,t} / A_{i,t-1} - 1.304857 * SGR_{i,t} \end{aligned}$$

Among them, FC represents the degree of enterprise financial constraints, and the greater the absolute value of FC, the smaller the degree of financial constraints. ΔPR represents the change in dividend per share, that is, cash dividends per share in the current year, and cash dividends per share in the last year. Size represents the size of the company, expressed as the natural logarithm of the company's total assets at the end of the period. Slack is financial slack, and the calculation formula is [(cash + trading financial assets + 0.5 * inventory + 0.7 * accounts receivable - short-term loans) / net value of fixed assets]. CF / A represents the proportion of cash flow in total assets at the end of the previous period. SGR is the growth rate of operating revenue as equal to [(operating revenue of the current year - operating revenue of last year) / operating revenue of last year].

2.3. Literature on the Relationship between Financial Constraints and CSR

The research results from [17] show that the degree of financial constraints affects the willingness of enterprises to implement social responsibility. Enterprises tend to reduce expenses to prevent and control business risks, and CSR is an expense item that is easier for management to reduce. [18] empirically discussed the relationship between political relevance, chain director networks (belonging to the governance scope of ESG), and CSR. The research findings show that enterprises with high political relevance will strengthen the positive impact of chain director networks on the implementation of social responsibility, and the strengthening function of central political relevance is more obvious than that of local

political relevance. The above studies show that the higher the degree of financial constraints, the worse the implementation performance of social responsibility. The research hypothesis of this study is summarized as follows:

H1: There is a negative correlation between the degree of corporate financial constraints and performance of social responsibility implementation.

2.4. Literature on the Relationship between Financial Constraints and Financial Performance

Using private companies as samples, [19] used an OLS regression model to study the relationship between financial constraints and financial performance. They found that there was a negative correlation between financial constraints and financial performance when other conditions remained unchanged. [20] took 1,645 A-share listed companies as samples and found that there was a negative correlation between financial constraints and corporate performance, and the uncertainty of economic policy regulates the negative correlation effect of financial constraints on corporate performance. The level of internal control determines the adjustment ability of economic policy uncertainty. The higher the level, the stronger the adjustment ability. Based on the data of Shanghai and Shenzhen A-share listed companies from 2012 to 2018, Zhang (2019) found a negative relationship between financial constraints and corporate performance. At the same time, it is affected by the investment efficiency. The higher the investment efficiency, the stronger the negative impact. Scholars have found that the overall financial constraint indicators have no significant impact on corporate performance [21]. Based on the above literature, we draw the following conclusions. 1. More literature shows that there is a negative correlation between financial constraints and corporate performance. 2. Under some conditions, financial constraints affect the ability of some indicators to promote corporate performance, but these conclusions may not be universal. Therefore, this study proposes the following hypothesis:

H2: There is a negative correlation between the degree of corporate financial constraints and financial performance.

2.5. Literature on the Relationship between ESG and Financial Performance

[22] found that the formulation of sound CSR and ESG strategies has a positive impact on corporate value and business performance, and this is a process of "indirect value creation." [23] evaluated a method of indexing ESG scores of U.S. listed companies based on MSCI ESG ratings (formerly KLD) statistical data from 2000 to 2016, and studied the relationship between return on assets and three dimensions of ESG. The study found that there was a significantly positive relationship between ESG and a bank's environmental awareness and profitability. [24] used a combination of machine learning technology and reasoning technology to predict the accuracy of ESG and financial performance (return on assets/ROA and return on equity/ROE), and whether there is a relationship

between ESG investment decisions and ROA and ROE. The research findings show that machine learning technology can accurately predict financial performance, and that there is a significant positive relationship between ESG practices and financial performance through a regression model.

However, some scholars have held different views. [25] showed that a CSR committee with at least one female member, will be a favorable factor in promoting the excellent performance of enterprises in ESG. In the field of corporate governance, the due diligence investment of independent directors and directors can significantly improve the overall CSR score; However, there is no significant correlation between CSR performance and financial performance. Nevertheless, most studies tend to show a positive correlation between the two variables. Therefore, the third research hypothesis of this study is as follows:

H3: The better the implementation of CSR, the better the financial performance of the enterprise.

2.6. Literature on the Relationship between ESG, Financial Constraints and Financial Performance

[26] believe that enterprises with higher financial constraints strengthen their social attention to their social responsibility, resulting in a significant weakening of their overall CSR performance. [27] believe that the better the CSR performance, the better the corporate performance and the higher the degree of financial constraints, the worse the CSR performance. The higher degree of financial constraints will significantly reduce the promotion of CSR performance on corporate financial performance.

There is a dearth of literature on the relationship between these three factors. The main conclusion of the literature that can be consulted at present is that the correlation between the degree of financial constraints and financial performance is negative, and social responsibility plays the role of an intermediary variable between financial constraints and financial performance. Therefore, the fourth hypothesis of this study is as follows.

H4: CSR mediates the relationship between financial constraints and corporate financial performance.

3. Methodology

According to the hypotheses summarized in the literature review, this study explores the relationships among financial constraints, CSR performance, and financial performance. The relationship between these three elements is shown in Figure 1.

The study sample is China's A-share listed companies rated by the ESG. At present, there are many ESG rating agencies for listed companies in China, such as the Sino-Securities Index, FTSE Russell, China Alliance of Social Value Investment, and Rankins CSR Rating (RKS). This study adopts the rating results of the Sino-Securities Index, which was established in September 2017. It is an independent third-party professional service agency for various asset management institutions, mainly providing

comprehensive services for index and indexed investments. Moreover, the company obtained authorization from both the Shanghai and Shenzhen Stock Exchanges, focusing on the R&D of index and index investment. It also provides whole industry chain services, including research and consulting, product design, marketing promotion, valuation, and data information. Its rating method has the characteristics of being close to the Chinese market, wide coverage, and efficient timeliness, and includes all A-share listed companies. Thus, this study employs the rating results of the Sino-Securities Index as the most suitable research sample. The research periods were 2019 and 2020. All the sample data were taken from the WIND and CSMAR databases. After data download, incomplete samples are deleted first, extreme values are deleted next, and a total of 7,315 samples are obtained.

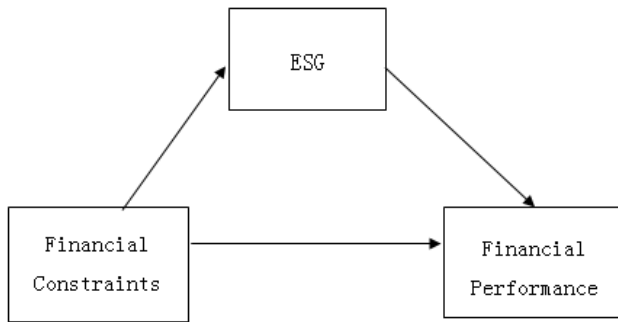


Figure 1. The relationship between financial constraints, corporate social responsibility, and financial performance

First, we investigate the relationships among financial constraints, CSR, and corporate financial performance. Second, this study explores whether CSR plays a mediating role between financial constraints and corporate financial performance, referring to the mediator test

approach of [28], and establishes the following models to inspect the intermediary role of CSR between financial constraints and financial performance.

Model 1:

$$ROA_{it} = \alpha_0 + \alpha_1 FC_{it} + \alpha_2 SCALE_{it} + \alpha_3 FCF_{it} + \alpha_4 SGR_{it} + \alpha_5 DEBT_{it} + \alpha_6 AGE_{it} + \alpha_7 STATE_{it} + \alpha_8 YEAR_{it} + \varepsilon_{it} \quad (1-1)$$

$$ESG_{it} = \beta_0 + \beta_1 FC_{it} + \beta_2 SCALE_{it} + \beta_3 FCF_{it} + \beta_4 SGR_{it} + \beta_5 DEBT_{it} + \beta_6 AGE_{it} + \beta_7 STATE_{it} + \beta_8 YEAR_{it} + \varepsilon_{it} \quad (1-2)$$

$$ROA_{it} = \gamma_0 + \gamma_1 FC_{it} + \gamma_2 ESG_{it} + \gamma_3 SCALE_{it} + \gamma_4 FCF_{it} + \gamma_5 SGR_{it} + \gamma_6 DEBT_{it} + \gamma_7 AGE_{it} + \gamma_8 STATE_{it} + \gamma_9 YEAR_{it} + \varepsilon_{it} \quad (1.3)$$

Model 2

$$ROE_{it} = \alpha_0 + \alpha_1 FC_{it} + \alpha_2 SCALE_{it} + \alpha_3 FCF_{it} + \alpha_4 SGR_{it} + \alpha_5 DEBT_{it} + \alpha_6 AGE_{it} + \alpha_7 STATE_{it} + \alpha_8 YEAR_{it} + \varepsilon_{it} \quad (1.4)$$

$$ESG_{it} = \beta_0 + \beta_1 FC_{it} + \beta_2 SCALE_{it} + \beta_3 FCF_{it} + \beta_4 SGR_{it} + \beta_5 DEBT_{it} + \beta_6 AGE_{it} + \beta_7 STATE_{it} + \beta_8 YEAR_{it} + \varepsilon_{it} \quad (1.5)$$

$$ROE_{it} = \gamma_0 + \gamma_1 FC_{it} + \gamma_2 ESG_{it} + \gamma_3 SCALE_{it} + \gamma_4 FCF_{it} + \gamma_5 SGR_{it} + \gamma_6 DEBT_{it} + \gamma_7 AGE_{it} + \gamma_8 STATE_{it} + \gamma_9 YEAR_{it} + \varepsilon_{it} \quad (1.6)$$

The flow chart of the mediating effect of the above model is as follows:

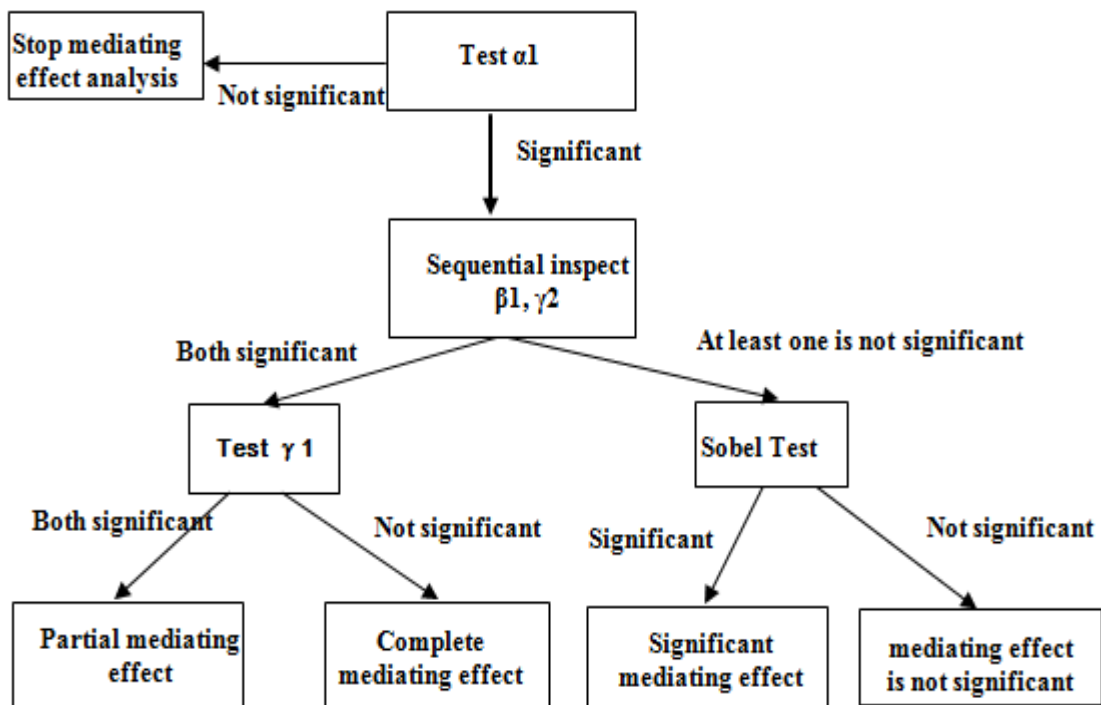


Figure 2. The flow chart of mediating effect test

Next, the financial constraint index is divided into five elements to test the characteristics of enterprises that are suited to an improvement in financial performance through the implementation of CSR.

Model 3

$$\begin{aligned} ROA_{it} = & \gamma_0 + \gamma_1 ESG_{it} + \gamma_2 FC_{it} + \gamma_3 ESG * FC_{it} \\ & + \gamma_4 FCF_{it} + \gamma_5 DEBT_{it} + \gamma_6 AGE_{it} \\ & + \gamma_7 STATE_{it} + \gamma_8 YEAR_{it} + \varepsilon_{it} \end{aligned}$$

Model 4

$$\begin{aligned} ROE_{it} = & \gamma_0 + \gamma_1 ESG_{it} + \gamma_2 FC_{it} + \gamma_3 ESG * FC_{it} \\ & + \gamma_4 FCF_{it} + \gamma_5 DEBT_{it} + \gamma_6 AGE_{it} \\ & + \gamma_7 STATE_{it} + \gamma_8 YEAR_{it} + \varepsilon_{it} \end{aligned}$$

Model 5

$$\begin{aligned} ROA_{it} = & \gamma_0 + \gamma_1 ESG_{it} + \gamma_2 \Delta PR_{it} + \gamma_3 SIZE_{it} \\ & + \gamma_4 SLACK_{it} + \gamma_5 CF / A_{it} + \gamma_6 SGR_{it} \\ & + \gamma_7 ESG * \Delta PR_{it} + \gamma_8 ESG * SIZE_{it} \\ & + \gamma_9 ESG * SLACK_{it} + \gamma_{10} ESG * CF / A_{it} \\ & + \gamma_{11} ESG * SGR_{it} + \gamma_{12} FCF_{it} + \gamma_{13} DEBT_{it} \\ & + \gamma_{14} AGE_{it} + \gamma_{15} STATE_{it} + \gamma_{16} YEAR_{it} + \varepsilon_{it} \end{aligned}$$

Model 6

$$\begin{aligned} ROE_{it} = & \gamma_0 + \gamma_1 ESG_{it} + \gamma_2 \Delta PR_{it} + \gamma_3 SIZE_{it} \\ & + \gamma_4 SLACK_{it} + \gamma_5 CF / A_{it} + \gamma_6 SGR_{it} \\ & + \gamma_7 ESG * \Delta PR_{it} + \gamma_8 ESG * SIZE_{it} \\ & + \gamma_9 ESG * SLACK_{it} + \gamma_{10} ESG * CF / A_{it} \\ & + \gamma_{11} ESG * SGR_{it} + \gamma_{12} FCF_{it} + \gamma_{13} DEBT_{it} \\ & + \gamma_{14} AGE_{it} + \gamma_{15} STATE_{it} + \gamma_{16} YEAR_{it} + \varepsilon_{it} \end{aligned}$$

3.1. Variable Definition

3.1.1. Dependent Variables

Referring to the research of [24], this study adopts the ROA and ROE as alternative variables of financial performance.

3.1.2. Independent Variables

3.1.2.1 Financial constraint: Considering that the research samples of this study are listed companies in China, the financial constraint evaluation model developed by [15] is adopted as the alternative variable of financial constraint, and the evaluation model is as follows:

$$\begin{aligned} FC_{i,t} = & -8.530658 * \Delta PR_{i,t} - 0.4599886 * SIZE_{i,t} \\ & - 0.0030249 * SLACK_{i,t} - \frac{2.453183 * CF_{i,t}}{A_{i,t-1}} \\ & - 1.304857 * SGR_{i,t} \end{aligned}$$

Among them, FC represents the degree of enterprise financial constraints, and the greater the absolute value of FC, the smaller the degree of financial constraints. ΔPR represents the variation in cash dividends per share, that is, cash dividends per share in the current year minus cash dividends per share in the previous year. Size represents

the scale of the company, expressed as the natural logarithm of the company's total assets at the end of the period. Slack is financial slack, and the calculation formula is [(cash + trading financial assets + 0.5 * inventory + 0.7 * accounts receivable - short-term loans) / net value of fixed assets]. CF/A represents the proportion of cash flow in total assets at the end of the previous period. SGR is the growth rate of operating revenue = [(operating revenue of the current year - operating revenue of last year) / operating revenue of last year]. Therefore, six variables are set based on the above formula: financial constraints (FC), cash dividend variation in the current year and last year (ΔPR), company size, slack, proportion of cash flow to total assets at the end of last year (CF/A) and growth rate of operating revenue (SGR). In this study's research model, the FC index and the five influencing factors take absolute values. The greater the absolute value, the smaller the degree of financial constraints.

3.1.2.2 Corporate social responsibility (ESG): This study uses the ESG rating results of the Sino-Securities index as an alternative variable of CSR. The rating results of the Sino-Securities index are divided into nine levels, from low to high: C, CC, CCC, B, BB, BBB, A, AA, and AAA. This study converted them into scores of 1-9 respectively.

3.1.2.3 Interaction terms of ESG and five elements of financial constraints: This study decentralized the variables of ESG, financial constraints, and detailed elements, and then set the interaction terms in the regression equation for analysis in order to explore the interaction of various factors causing financial constraints and corporate social responsibility. There are six variables: the interaction term of ESG and financial constraints (ESG*FC), ESG and cash dividend variation in the current year and last year (ESG* ΔPR), ESG and company scale (ESG *SIZE), ESG and financial slack (ESG*SLACK), ESG and the proportion of cash flow in total assets at the end of last year (ESG * CF/A), ESG and operating revenue growth rate (ESG * SGR).

3.1.3. Control Variables

3.1.3.1 Scale: [29] argue that enterprise scale may affect enterprise performance because large enterprises have the advantage of economies of scale and can hedge against greater risks. In this study, the total assets of the sample companies were taken as an alternative variable of company size. To narrow the absolute value gap between this variable and other variables, and to avoid affecting the relative relationship, its natural logarithm is taken.

3.1.3.2 Free cash flow (FCF): This refers to the research findings of [30] which indicate that the level of free cash flow has a significant impact on investment efficiency. Considering that investment efficiency is closely related to financial performance, this study uses free cash flow as a control variable.

3.1.3.3 Operating revenue growth rate (RG): The research results of [31] show that the higher the growth rate of operating revenue, the more investors are optimistic about the future profitability of the company and will attract more investors. In this study, the variation in operating revenue is calculated, that is, the variation in operating revenue in the current year and the previous

year. This is then divided by the revenue in the previous year.

3.1.3.4 Liability ratio (DEBT): Companies with high debt ratios are more likely to face default risk in the future, resulting in failure to repay debts. If the debt ratio is too high, it will affect the use of enterprise funds and consequently affect the profitability of enterprises. Referring to the practice of [32], this study measures the ratio of total liability to total assets.

3.1.3.5 Age of the company: [33] pointed out that the company's age is related to its performance and believed that the profitability and production efficiency of the company will change differently with different age stages. This study was conducted from the date of establishment to the end of the research year; therefore, this study uses company age as a control variable.

3.1.3.6 Property right nature (STATE): According to the research of [30], state-owned enterprises and non-state-owned enterprises have a significant impact on enterprise investment efficiency. The main variables of this study are financial constraints and financial performance, which are related to investment efficiency. Therefore, this study sets property right nature as one of the control variables, which is a virtual variable. If it is a state-owned enterprise, it is set as "1," otherwise it is set as "0."

3.1.3.7 Industry (IND): [34] study stated that, compared to traditional industries, the IT industry is characterized by obvious fluctuations and changes in financial performance. Therefore, this study adopts a dummy variable for the industries. The IT industry is set as "1" and the non-IT industry is set as "0."

3.1.3.8 Year (YEAR): Taking into account the impact of COVID-19 on the overall economy in 2020, this variable set the year as a control variable. This variable is a dummy variable. If the sample for 2019 is set to be "0," the sample in 2020 will be set as "1."

4. Empirical Results

Table 1 shows the descriptive statistics of all variables, so we first conduct an overall review of all sample distributions.

It can be seen from Table 1 that the samples obtained are complete in the high and low distribution of various variables, the samples of good and bad financial performance are all included, and the differences in the degree of financial constraints are significant. The performance of CSR includes A-to-C ratings, with obvious differentiation. The company scale and various financial indicators are also widely distributed, with a sample size of 7,315, which shows that this sample is sufficient and representative to a certain extent. It can be seen from the analysis of the mean value and standard deviation of each variable in the table that it is not normally distributed. Therefore, it is reasonable to winsorize the sample used in this study.

Next, Table 2 to Table 6 present the empirical results of the regression and analysis. Before carrying out the empirical results, we first confirmed the various fitting indicators of the regression results. In the regression analysis from Table 2 to Table 6, the adjusted R-square

value is between 0.200 and 0.266, which is a reasonable range in the discipline of social science, and the F value ranges from 191.085 to 267.767. These results indicate that the regression model design in this study is sufficiently predictive.

Table 1. descriptive statistics (N = 7,315)

	Min.	Max.	Ave.	Std.
ROE	-1.1581	0.4047	0.0368	0.2058
ROA	-0.7006	0.4393	0.0165	0.1369
ESG	3.0000	9.0000	6.2991	1.3075
FC	1.2027	13.2743	6.3337	1.6633
ΔPR	-4.2653	4.7345	0.0275	1.0842
SIZE	4.8600	8.4140	6.0840	0.6745
SLACK	-0.0046	0.8936	0.0343	0.1167
CF/A	-0.5156	1.0794	0.0514	0.2254
SGR	-0.9293	2.0363	0.0932	0.4169
ESG*FC	-6.1311	7.7516	0.4413	1.8398
ESG*ΔPR	-21.2629	21.8118	0.4592	8.4734
ESG*SIZE	-17.4060	20.0384	0.0136	7.9923
ESG*SLACK	-20.3960	19.2810	0.3691	8.0755
ESG*CF/A	-0.3942	0.5072	0.0039	0.1013
ESG*SGR	-0.9974	1.1015	0.0094	0.3239
FCF	-0.8511	2.2716	0.0753	0.3359
RG	-0.7122	1.5606	0.0714	0.3195
DEBT	0.0650	0.9763	0.4451	0.2137
SCALE	10.5730	18.2917	13.2264	1.4664
AGE	9.3178	35.1041	20.9103	5.5179
STATE	0.0000	1.0000	0.1329	0.3395
IND	0.0000	1.0000	0.1814	0.3854
YEAR	0.0000	1.0000	0.5150	0.4998

Note 1: For the description of each variable, please refer to 3.1 "variable definition" in Section 3 "Methodology."

Table 2. The empirical results of model 1-2 and 2-2_The dependent variable is ESG (N = 7,315)

	Coef.	t	p
Constant term	0.927	6.366	0.000***
FC	-0.041	-3.833	0.000***
FCF	0.100	2.285	0.022**
RG	0.523	10.453	0.000***
DEBT	-1.520	-20.790	0.000***
SCALE	0.444	34.448	0.000***
AGE	0.015	5.997	0.000***
STATE	0.075	1.816	0.069*
IND	-0.016	-0.454	0.650
YEAR	0.130	4.736	0.000***
Aje R_sq.		0.214	
F Value		222.315***	

Note 1: For the description of each variable, please refer to 3.1 "variable definition" in Section 3. "Methodology."

Note 2: P < = 0.01, the significance is * * *, 0.01 < p < = 0.05, the significance is * *, 0.05 < p < = 0.1, the significance is *.

As shown in Table 2, financial constraints (FC) have a negative and significant impact on the implementation of CSR, indicating that the greater the degree of financial constraints (the smaller the absolute value of FC), the worse the performance of enterprises in social responsibility.

Table 3. The empirical results of model 1_The dependent variable was ROA (N = 7,315)

	Model 1-1			Model 1-3		
	Coef.	t	P	Coef.	t	p
Constant term	-0.176	-11.436	0.000***	-0.185	-12.043	0.000***
FC	0.008	7.338	0.000***	0.018	7.717	0.000***
FCF	0.019	4.175	0.000***	0.093	3.979	0.000***
RG	0.098	18.570	0.000***	-0.208	17.546	0.000***
DEBT	-0.223	-28.826	0.000***	0.011	-26.250	0.000***
SCALE	0.016	11.424	0.000***	0.000	7.670	0.000***
AGE	0.001	2.213	0.027**	0.007	1.661	0.097*
STATE	0.007	1.703	0.089*	-0.014	1.541	0.123
IND	-0.014	-3.720	0.000***	0.025	-3.693	0.000***
YEAR	0.026	9.102	0.000***	0.010	8.687	0.000***
ESG	-	-	-	0.009	7.946	0.000***
Aj _e R _{sq}	0.200			0.206		
F Value	203.570***			191.085***		

Note 1: For the description of each variable, please refer to 3.1 “variable definition” in Section 3. “Methodology.”

Note 2: P < = 0.01, the significance is ***, 0.01 < p < = 0.05, the significance is **, 0.05 < p < = 0.1, the significance is *.

Table 4. The empirical results of models 2-1 and 2-3_The dependent variable is ROE (N = 7,315)

	Model 2-1			Model 2-3		
	Coef.	t	P	Coef.	t	p
Constant term	-0.319	-14.203	0.000***	-0.341	-15.372	0.000***
FC	0.006	3.493	0.000***	0.007	4.153	0.000***
FCF	0.021	3.078	0.002***	0.018	2.748	0.006***
RG	0.186	24.149	0.000***	0.173	22.604	0.000***
DEBT	-0.385	-34.154	0.000***	-0.347	-30.351	0.000***
SCALE	0.036	17.938	0.000***	0.025	11.690	0.000***
AGE	0.000	0.551	0.582	0.000	-0.409	0.682
STATE	0.009	1.426	0.154	0.007	1.151	0.250
IND	-0.034	-6.092	0.000***	-0.033	-6.097	0.000***
YEAR	0.008	1.949	0.051*	0.005	1.207	0.227
ESG	-	-	-	0.025	13.806	0.000***
Aj _e R _{sq}	0.247			0.266		
F Value	267.767***			266.307***		

Note 1: For the description of each variable, please refer to 3.1 “variable definition” in Section 3. “Methodology.”

Note 2: P < = 0.01, the significance is ***, 0.01 < p < = 0.05, the significance is **, 0.05 < p < = 0.1, the significance is *.

Table 5. The empirical results of model 3 and model 4 (N = 7,315)

	ROA			ROE		
	Coef.	t	p	Coef.	t	p
Constant term	-0.191	-12.460	0.000***	-0.349	-15.709	0.000***
ESG	0.009	7.124	0.000***	0.023	13.083	0.000***
FC	0.010	8.610	0.000***	0.008	4.906	0.000***
ESG*FC	-0.005	-6.693	0.000***	-0.006	-5.554	0.000***
FCF	0.020	4.246	0.000***	0.020	2.965	0.003***
RG	0.088	16.378	0.000***	0.167	21.544	0.000***
DEBT	-0.202	-25.508	0.000***	-0.341	-29.687	0.000***
SCALE	0.012	8.025	0.000***	0.025	11.982	0.000***
AGE	0.000	1.522	0.128	0.000	-0.529	0.597
STATE	0.006	1.343	0.179	0.006	0.985	0.324
IND	-0.014	-3.637	0.000***	-0.033	-6.053	0.000***
YEAR	0.025	8.714	0.000***	0.005	1.210	0.226
Aj _e R _{sq}	0.211			0.269		
F Value	178.827***			245.890***		

Note 1: For the description of each variable, please refer to 3.1 “variable definition” in Section 3. “Methodology.”

Note 2: P < = 0.01, the significance is ***, 0.01 < p < = 0.05, the significance is **, 0.05 < p < = 0.1, the significance is *.

Table 6. The empirical results of model 5 and Model 6 (N = 7,315)

	ROA			ROE		
	Coef.	t	p	Coef.	t	p
Constant term	-0.639	-7.134	0.000***	-0.693	-5.360	0.000***
ESG	0.079	5.745	0.000***	0.078	3.929	0.000***
ΔPR	0.011	7.882	0.000***	0.007	3.631	0.000***
SIZE	0.036	12.166	0.000***	0.062	14.665	0.000***
SLACK	-0.021	-1.702	0.089*	-0.035	-1.997	0.046**
CF/A	0.054	8.199	0.000***	0.088	9.178	0.000***
SGR	0.076	21.348	0.000***	0.133	25.846	0.000***
ESG*ΔPR	-0.002	-1.605	0.109	0.002	1.061	0.289
ESG*SIZE	0.000	-0.165	0.869	-0.002	-1.164	0.244
ESG*SLACK	-0.010	-4.747	0.000***	-0.014	-4.568	0.000***
ESG*CF/A	0.010	0.612	0.541	0.048	1.991	0.047**
ESG*SGR	-0.012	-1.978	0.048**	-0.059	-6.634	0.000***
FCF	0.026	5.428	0.000***	0.027	4.054	0.000***
DEBT	-0.196	-24.725	0.000***	-0.332	-29.057	0.000***
AGE	0.001	2.257	0.024**	0.000	0.176	0.860
STATE	0.003	0.814	0.416	0.002	0.373	0.709
IND	-0.013	-3.511	0.000***	-0.032	-5.910	0.000***
YEAR	0.023	7.956	0.000***	0.001	0.205	0.837
AdjR _{sq}	0.221			0.283		
F Value	123.380***			170.516***		

Note 1: For the description of each variable, please refer to 3.1 “variable definition” in Section 3. “Methodology.”

Note 2: $P < 0.01$, the significance is ***, $0.01 < p < 0.05$, the significance is **, $0.05 < p < 0.1$, the significance is *.

Models 1-1 and 1-3 in Table 3 and 1-2 in Table 2 are affiliated to model 1, while models 2-1 and 2-3 in Table 4 and 1-2 in Table 2 belong to model 2. The empirical results for the two models are approximately the same. A comparison of models 1-1 and 1-3 and models 2-1 and 2-3 reveals that when the FC value is greater (the degree of financial constraint is smaller), it has a significant impact on financial performance (return on total assets and return on equity) in the same direction. However, after adding the variable influence of ESG, except that ESG has a significant positive impact on financial performance, the impact of financial constraints on financial performance is more significant (t value increases), indicating that the impact on the improvement of financial performance is more obvious. The empirical results in Table 3, Table 4, and 2 show that ESG has partial mediation effects between financial constraints and financial performance according to the intermediary effect judgment process in Figure 1.

Next, we add the interaction of CSR and financial constraints to investigate the impact of enterprises with large financial constraints on financial performance through the implementation of CSR. The empirical results are presented in Table 5 and Table 6. Table 5 presents the overall indicators of financial constraints as variables, and Table 6 sets different variables for the five elements of financial constraints to test their respective effects.

The empirical results in Table 5 indicate that the better the performance of social responsibility, the lower the degree that financial constraints will help to improve financial performance. However, Table 6 presents the interaction of ESG for the five elements affecting financial constraints for a detailed analysis of the characteristics of enterprises that are more suitable for improving financial performance by implementing CSR. The results show that in the context of return on total assets, when the factors of

dividend payout rate, assets scale, and the proportion of cash flow in the total assets at the end of last year lead to greater financial constraints and declining financial performance, CSR implementation is ineffective in improving financial performance. However, if a high degree of financial constraints are caused by the factors of financial slack and the growth rate of operating revenue, it will be helpful to enhance financial performance by implementing CSR programs.

As for the ROE, for enterprises with poor financial performance due to high financial constraints caused by dividend payout rate and assets scale, the implementation of CSR has no significant impact on the improvement of financial performance. However, if a high degree of financial constraint is caused by financial slack and the growth rate of operating revenue, the implementation of CSR is an effective strategy to improve financial performance. Nevertheless, for enterprises with a high proportion of cash flow in total assets at the end of last year, the results in Table 5 indicate that although the interaction terms with ESG show a positive significant impact, they are significantly lower than those without ESG (t value decreases).

It should be noted that most of the above results indicate a negatively significant relationship with financial performance in the interaction terms, implying that the greater the degree of financial constraints, the greater the mediating effect of CSR. However, if the financial constraints are smaller, that is, the greater the interaction terms of ESG and financial constraints, it will have an adverse impact on financial performance. According to [9] financial constraint theory, enterprises' investment will be affected by their own internal capital. It may be that enterprises with fewer financial constraints can leverage more investment tools to obtain greater financial profits.

5. Conclusions

5.1. Theoretical Meaning

The results of this study indicate that the degree of financial constraints has a negatively significant impact on enterprise financial performance, that is, the greater the degree of financial constraint, the lower the financial performance. CSR plays a mediating role between financial constraints and financial performance. The empirical results of this study are summarized as follows:

1. The degree of corporate financial constraints has a significant negative impact on financial performance.
2. There is a negative relationship between the degree of corporate financial constraints and performing CSR.
3. Enterprises with high financial constraints due to the factors of financial slack and growth rate of operating revenue can significantly improve their financial performance through the implementation of CSR.
4. If enterprises with smaller financial constraints invest too much in CSR, it will have a negative impact on financial performance.

5.2. Practical Meaning

Based on the empirical results and research findings of this study, the following suggestions are proposed:

1. For enterprises: When the degree of financial constraints is high, many enterprises will choose to minimize expenditures. As there are currently no mandatory laws and policies for corporate social responsibility, relevant expenditures are easier to cut. However, many factors cause financial constraints. Financial slack and operating revenue growth are closely related to sales strategy, consumer recognition, and bank interaction. The implementation of CSR is the most effective way to improve the relationship with banks, consumers, and other stakeholders. Therefore, in the case of enterprises with high financial constraints due to financial slack and the growth rate of operating revenue, CSR strategies should be formulated more effectively to improve financial performance. However, enterprises with small financial constraints have many more investment targets and are more likely to achieve greater investment efficiency. Therefore, CSR spending does not need to be increased; otherwise, it will weaken financial performance.

2. For regulators and policymakers: Based on the different operating conditions of each enterprise, there is no specific standard for the implementation of CSR, but enterprises are encouraged to implement it. However, according to the empirical results of this study, the CSR implementation does contribute to the “win-win” effect between enterprises and stakeholders. Therefore, this study suggests that the state should formulate flexible policies, strengthen publicity, and strengthen the motivation and action of enterprises to undertake social responsibility, so as to improve economic development and social welfare.

5.3. Research Limitation

At present, CSR evaluation indicators include social contribution per share and ESG ratings with several institutions. However, each rating standard is different. Considering the integrity of the sample, this study only selects the rating results of Sino-Securities Index with a wide rating range.

References

- [1] Kaplan, S. N. and Zingales, L. (1997). Do Investment-Cash Flow Sensitivities Provide Useful Measures of Financial Constraints? *Quarterly Journal of Economics*, 112(1), 169-215.
- [2] Liu, L. and Yu, W. (2021). Comparative study on enterprise ESG evaluation and traditional credit rating system. *New Finance*, 4, 59-64.
- [3] Kim, S., and Li, Z. C. (2021). Understanding the Impact of ESG Practices in Corporate Finance. *Sustainability*, 2021, 13(7), 3746.
- [4] Zhang, H., Zhou, Y., Yin, H., Ma, S., Yang, X., Qiu, M. and Zhang, J. (2017). Research on ESG green rating and green index. *Financial Forum*, 2017, 22 (9), 3-14.
- [5] Zhong, P., Wu, T. and Li, X. (2021). An Empirical Study on the Relationship among Corporate Social Responsibility Report, Social Irresponsibility and Financial Performance of Listed Companies. *Forecasting*, 40(1), 17-23.
- [6] Modigliani, F. and Miller, M. H. (1958). The Cost of Capital, Corporation Finance and the Theory of Investment. *The American Economic Review*, 48(3), 261-297.
- [7] Myers, SC and Majluf, NS (1984). Corporate Financial and Investment Decisions When Firms Have Information that Investors Do Not Have. *Journal of Financial Economics*, 13(2), 187-221.
- [8] Fazzari, S., Hubbard, R. and Petersen, B. (1988). Investment, Financial Decisions, and Tax Policy. *American Economic Review*, 78(2), 200-205.
- [9] Bernanke, B. and Gertler, M. (1989). Agency Cost, Net Worth, and Business Fluctuations. *The American Economics Review*, 79(1), 14-31.
- [10] Yan, R., Jiang, X. (2019). The Multiple Relationship Model and Empirical Research of Institutional Environment, Political Connections, Financing Constraints and R&D Investment. *Chinese Journal of Management*, 2019, 16(01), 72-84.
- [11] Jiang, F., Cai, W., Cai, X. and Li, X. (2019). Microeconomic Effects of Bank Competition: Evidence from Corporate Financial Constraints. *Economic Research Journal*, 54 (06), 72-88.
- [12] Zhang, X., Li, Z. and Li, C. (2019). Banking Competition, Financial Constraints, and Corporate Innovation: Evidence from Industrial Firms in China. *Journal of Financial Research*, 10, 98-116.
- [13] Whited, T. M. and Wu, G. (2006). Financial constraints risk. *Review of Financial Studies*, 2, 531-559.
- [14] Hadlock, CJ and Pierce, JR. (2010). New Evidence on Measuring Financial Constraints: Moving Beyond the KZ Index. *Review of Financial Studies*, 23(5), 1909-1940.
- [15] Zhai, S., Geng, J. and Han, Y. (2012). Design and Efficiency Evaluation of Financial Constraint Index: Based on The Empirical Analysis Using the Panel Data of A-Share Companies. *Modern Finance and Economics-Journal of Tianjin University of Finance and Economics*, 32 (7), 46-58.
- [16] Lamont, O., Polk, C. and Saa-Requejo, J. (2001). Financial Constraints and Stock Returns. *Review of Financial Studies*, 14(2), 529-554.
- [17] Chen, J. and Zheng, H. (2020). Financing Constraints, Customer Bargaining Ability and Corporate Social Responsibility. *Accounting Research*, 8, 50-63.
- [18] Li, X., Fung, HG, Zhu, Q. and Liu, Z. (2020). Interlocking Directorate Networks, Financial Constraints and the Social Responsibility of Private Enterprises. *Chinese Journal of Management*, 17(8), 1208-1217.
- [19] Zhang, Y., Qiang, C., Gao, L. and Zhou, X. (2021). Financial constraints, commercial credit and financial performance of private enterprises. *Friends of Accounting*, 10, 67-73.

- [20] Li, Y., Pang, H. and Pang, H. (2021). Research on the relationship between financing constraints and enterprise performance -- from the perspective of economic policy uncertainty and internal control. *Friends of Accounting*, 2, 49-55.
- [21] Gu, L., Li, J. and Peng, Y. (2018). Financing Conditions, Financing Constraints and Firm Performance. *Economic Theory and Business Management*, 7, 88-99.
- [22] Broadstock, D. C., Matousek, R., Meye, M. and Tzeremes, N. G. (2020). Does corporate social responsibility impact firms' innovation capacity? The indirect link between environmental & social governance implementation and innovation performance. *Journal of Business Research*, 119, 99-110.
- [23] Brogi M. and Lagasio, V. (2018). Environmental, social, and governance and company profitability: Are financial intermediaries different? *Corporate Social Responsibility and Environmental Management*, 26(3), 576-587.
- [24] De Lucia C., Paziienza P. and Bartlett, M. (2020). Does Good ESG Lead to Better Financial Performances by Firms? Machine Learning and Logistic Regression Models of Public Enterprises in Europe. *Sustainability*, 12, 5317.
- [25] Uyar, A., Kilic, M., Koseoglu, MA, Kuzey, C. and Karaman, A. S. (2020). The link among board characteristics, corporate social responsibility performance, and financial performance: evidence from the hospitality and tourism industry. *Tourism Management Perspectives*, 35, 100714.
- [26] Leong, C. K. and Yang, Y. C. (2021). Constraints on "Doing Good": Financial constraints and corporate social responsibility. *Finance Research Letters*, 40, 101694.
- [27] Zhu, Y., Xue, W. and An, Z. (2016). Financial constraints, corporate social responsibility performance and corporate performance. *Finance and Accounting Monthly*, 2016 (10), 27-31.
- [28] Wen, Z. and Ye B. (2014). Analyses of Mediating Effects: The Development of Methods and Models. *Advances in Psychological Science*, 22 (5), 731-745.
- [29] Choi, J. and Wang, H. (2009). Stakeholder relations and the persistence of corporate financial performance. *Strategic management journal*, 30(8), 895-907.
- [30] Yan, S. and Wang, D. (2021). "The Belt and Road"Corporate Social Responsibility, Financing Constraints and Investment Efficiency. *Finance & Economics*, 2, 45-55.
- [31] Maury, B. and Pajuste, A. (2005). Multiple large shareholders and firm value. *Journal of Banking and Finance*, 29(7), 1813-1834.
- [32] Margaritis, D. and Psillaki, M. (2007). Capital structure and firm efficiency. *Journal of Business Finance & Accounting*, 34(9-10), 1447-1469.
- [33] Coad, A., Segarra, A. and Teruel, M. (2013). Like milk or wine: Does firm performance improve with age? *Structural Change and Economic Dynamics*, 24, 173-189.
- [34] Wang, H.-M., Yu, T. H.-K. and Hsiao, C.-Y. (2020). The Causal Effect of Corporate Social Responsibility and Corporate Reputation on Brand Equity: A Fuzzy-Set Qualitative Comparative Analysis. *Journal of Promotion Management*, 27(5), 630-641.



© The Author(s) 2021. This article is an open access article distributed under the terms and conditions of the Creative Commons Attribution (CC BY) license (<http://creativecommons.org/licenses/by/4.0/>).